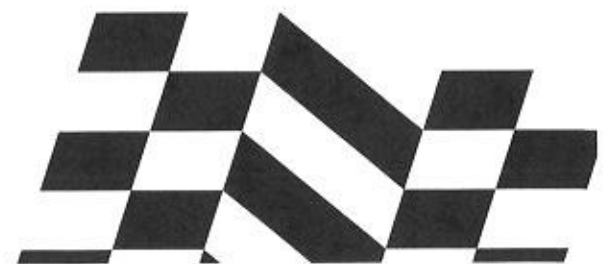
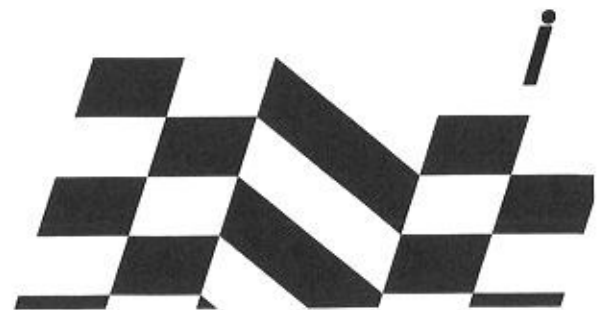


***11th Generation Civic  
HRC Tow Strap Install Guide  
(Model Years 2022-2026)***



## ***This Kit Includes:***

<b><i>Part Number</i></b>	<b><i>Description</i></b>	<b><i>Quantity</i></b>
<b><i>74717FG2JG000</i></b>	<b><i>Tow Strap</i></b>	<b><i>1</i></b>
<b><i>71138FG2JC000</i></b>	<b><i>Bumper Beam Spacer</i></b>	<b><i>1</i></b>
<b><i>90133FC4YA200</i></b>	<b><i>Bolt, Hex 7/16"-20 x5"</i></b>	<b><i>1</i></b>
<b><i>90193FC4YB000</i></b>	<b><i>Nut, Nylock 7/16"-20</i></b>	<b><i>1</i></b>
<b><i>90415FC4YA300</i></b>	<b><i>Washer, 7/16"</i></b>	<b><i>2</i></b>



## ***Tools Required:***

***Phillips Head Screwdriver***

***Flat Head Screwdriver***

***Paint Pen***

***Diagonal Cutters or Sheers (to trim plastic)***

***Center Punch***

***1/2" Drill Bit***

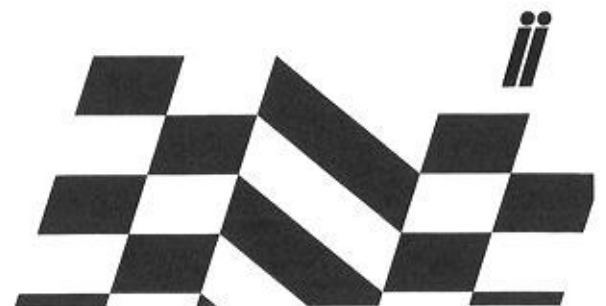
***Handheld Drill***

***5/8" wrench***

***5/8" socket***

***3/8 Drive Ratchet***

***Safety Glasses (remember to ALWAYS wear these!)***



## ***Step 1***

- ***Remove the Front Bumper.***



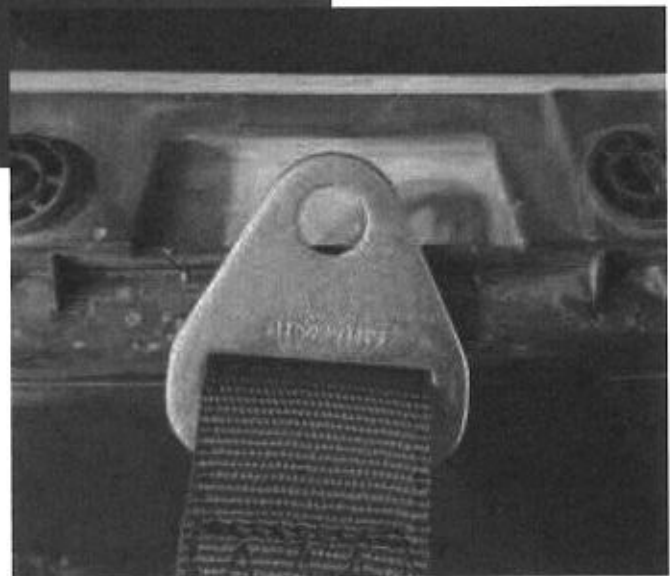
## **Step 2**

- **Remove the Front Bumper Air Screen (13 bumper clips).**



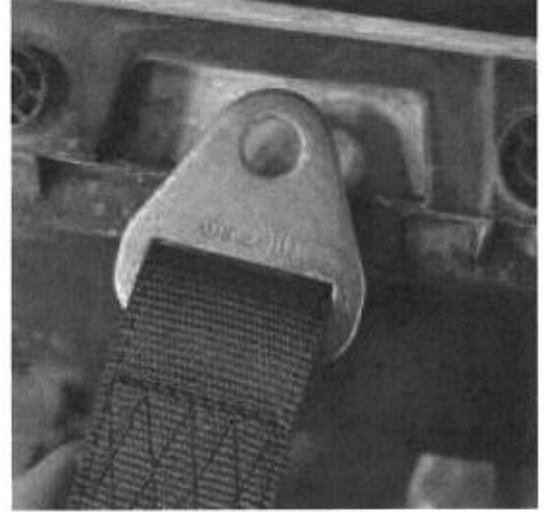
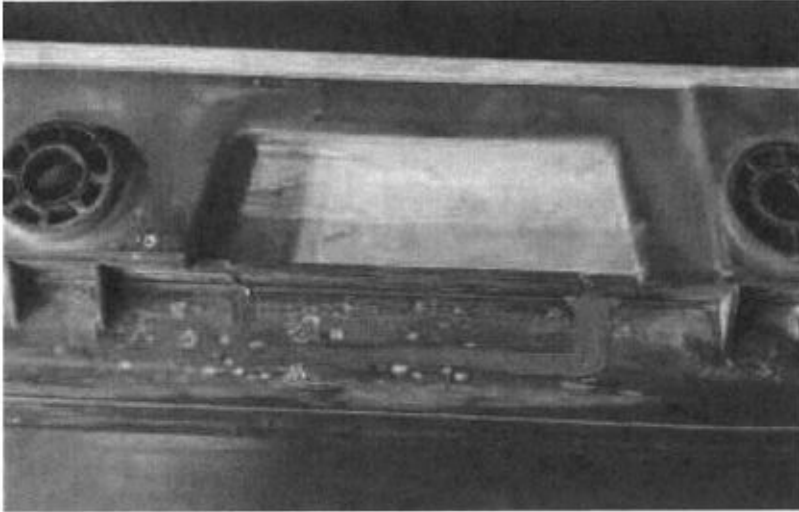
## **Step 3**

- **Mock up the placement of the Tow Strap on the Front Bumper Safety Plate. The Tow Strap can be mounted on either side of the front bumper (Left side shown).**



## **Step 4**

- **Mark an outline to trim part of the Front Bumper Safety Plate.**



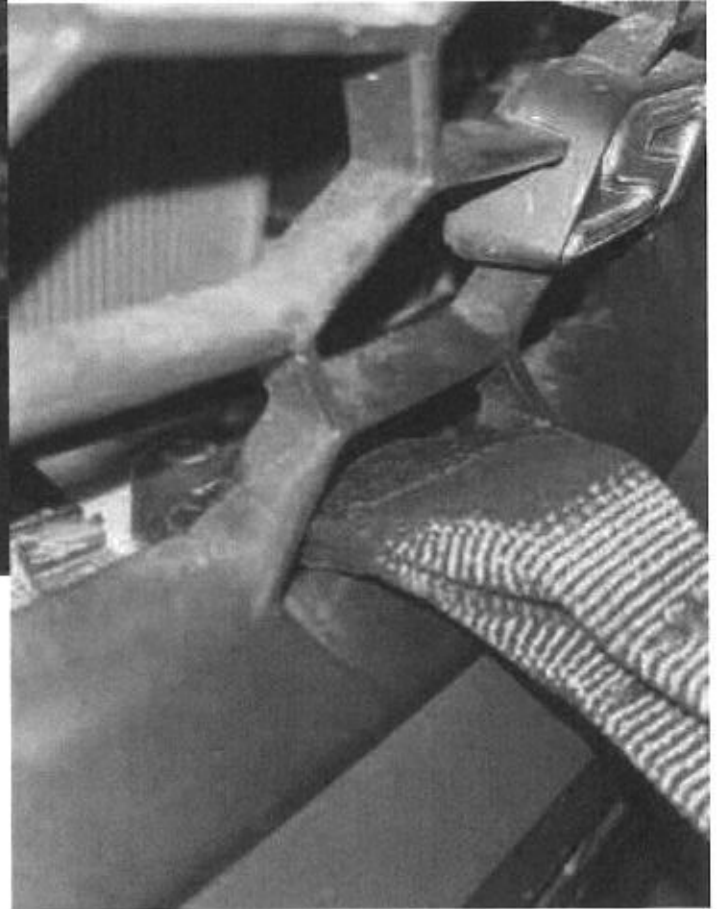
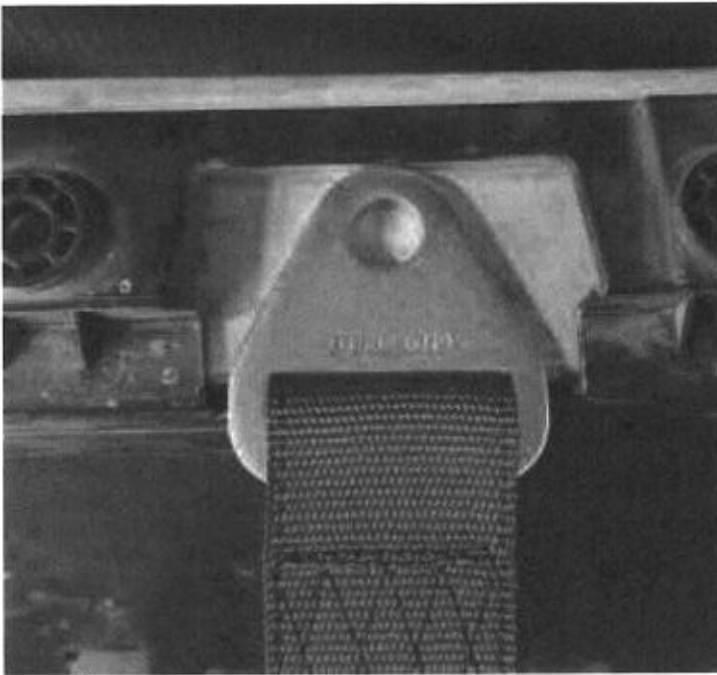
## **Step 5**

- **Remove the Front Bumper Safety Plate and trim.**



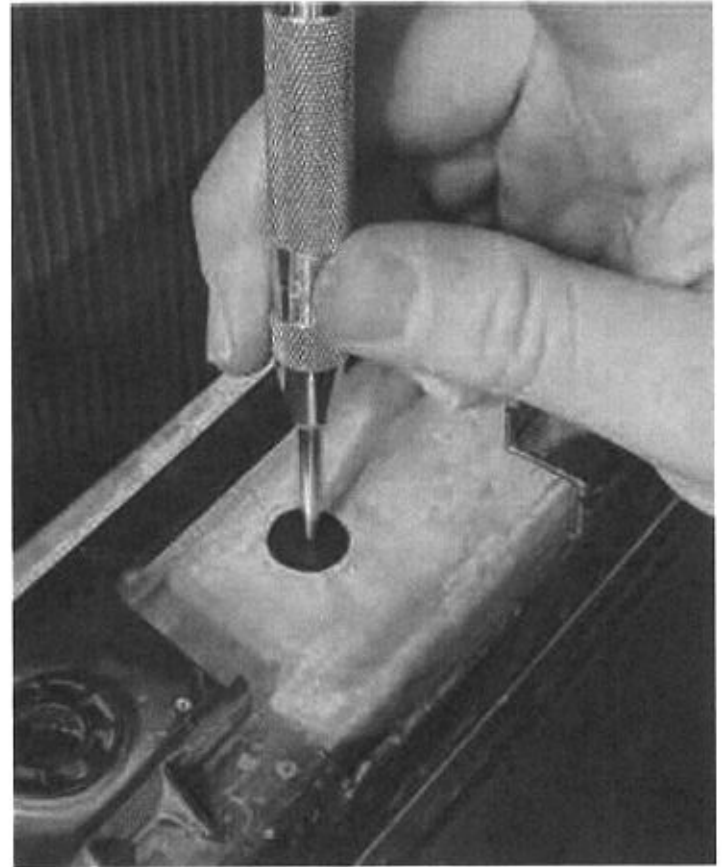
## **Step 6**

- **Re-install the Front Bumper Safety Plate and mock up tow strap. Ensure there is sufficient clearance from the trim and that the tow strap is not contacting any plastic.**
  - **It is recommended to loosely place the Front Bumper onto the car to check the Tow Strap's position in relation to the grille cutouts.**

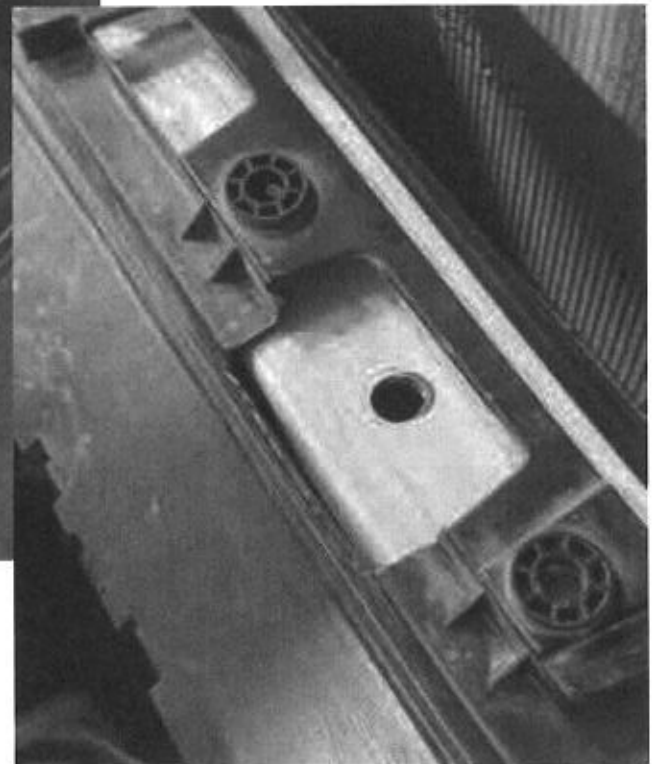


## **Step 7**

- **Once the desired position of the Tow Strap is verified, use a permanent marker to mark the bolt hole location on the Front Bumper Beam. Then, use a center punch to mark a starting point for your drill bit. Use a 1/2" drill bit to drill the upper hole. For the lower hole, repeat this process directly below the upper hole to ensure the holes are aligned and that the bolt will be vertical once installed.**

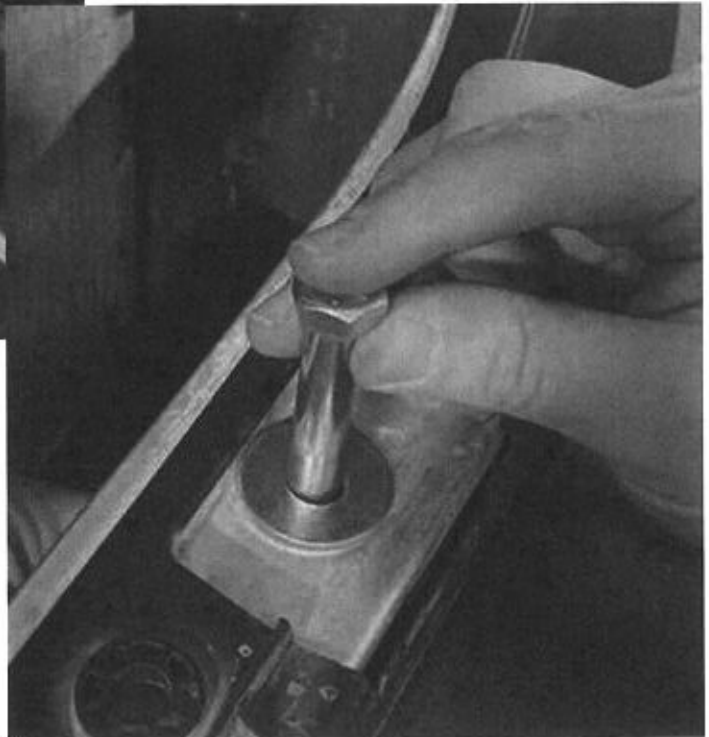


**TIP: To help control the amount of metal shavings being flung by the bit, hold a vacuum near the drill location to catch any shavings. Again, remember to ALWAYS wear safety glasses!**



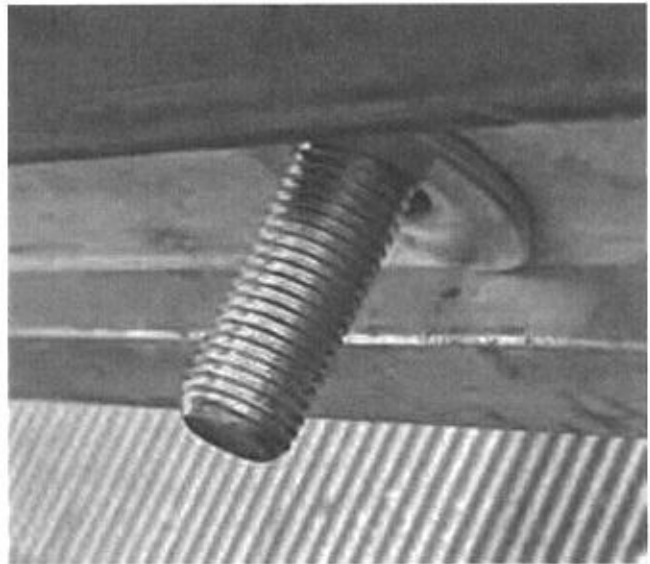
## **Step 8**

- **Verify the fitment of the hardware. Place the spacer inside of the bumper beam, run the bolt through and ensure that the holes you have drilled are aligned properly.**



## Step 9

- **Once fitment is verified, it is time to install the tow strap. Place the spacer inside the bumper beam, place the tow strap and a washer on top of the beam, then run the bolt through. Place a Washer on the underside of the bumper beam and thread the nylock nut on.**
  - **TIP: The underside of the Safety Plate is just long enough that you can use it to hold the washer in place (see image).**

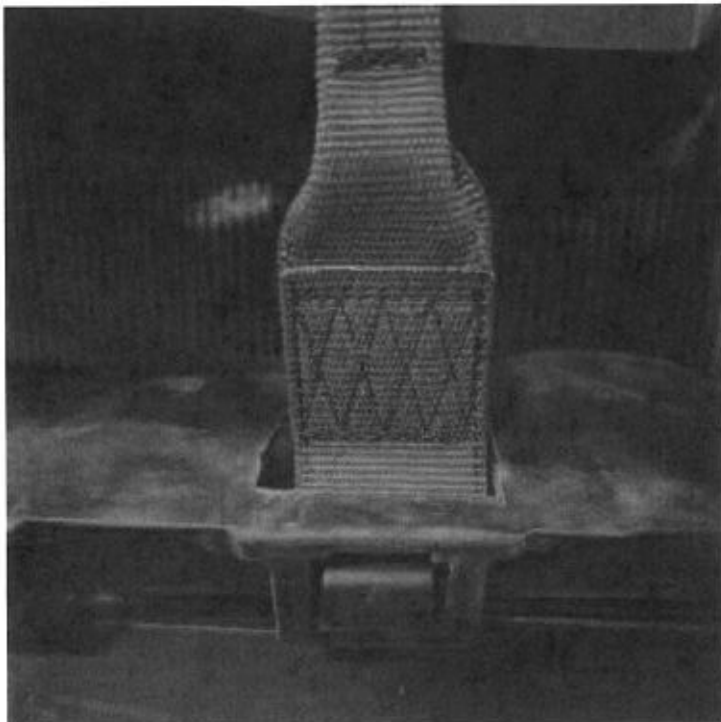
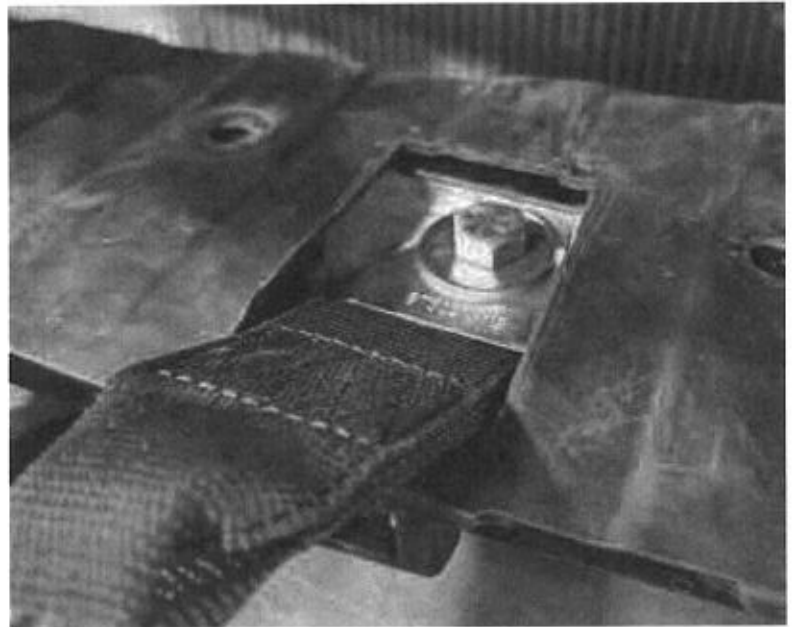


## Step 10

- **Tighten the bolt and nylock nut to the bumper beam to 45 ft. lbs (61Nm) of Torque.**

## **Step 11**

- **Trim the Front Bumper Air Screen to clear the tow strap. Ensure there is sufficient clearance from the trim and that the tow strap is not contacting any rubber or plastic on its sides. This will prevent the tow strap from fraying over time.**



## **Step 12**

- *Re-install the Front Bumper Air Screen.*

## **Step 13**

- *Re-install Front Bumper and Carefully guide the tow strap through the grille.*



## **Step 14**

- **Stand back and enjoy your hard work! Take some photos, share to social media, and tag HRC-US**

*Instagram: @hondaracing\_us*

*X: @hondaracing\_us*

*LinkedIn: Honda Racing Corporation USA*

*Facebook: HondaRacingUS*

*TikTok: @hondaracing\_us*

*YouTube: @HondaRacingUS*



**HRC**  
Honda RACING

